



# Elmtree Echo

Issue 12



**Ambitious - Curious - Resilient - Inclusive**



## A Message from Mrs Ohene

Dear Parents and Carers,

What a wonderful week we've had at Elmtree. Please see our special edition newsletter all about 'UK Parliament Week' which we took part in this week. Our House Captains worked incredibly hard to prepare, present and help others learn about how our country makes laws. The children chose to debate the issue of safe driving and parking using role play in assembly and despite all the excuses of our 'parents' (children who acted as parents in the assembly!), the children voted in favour of the children- to keep safe (park safely and respectfully) and healthy (do not leave engines idling). They've even made a new law for Elmtree: *all adults should follow the rules of the road.*

Yesterday, it was Thanksgiving in different parts of the world; a day to focus on gratitude and the plentiful harvests. At Elmtree, we had a very different day- our big birthday bash! It was so lovely to see and hear the children's excitement, their partywear and enjoy celebrations together. There were four of us with birthdays yesterday! We sang in assembly, danced at lunchtime and everyone enjoyed their cupcake. Thank you so much for your heartfelt generosity with cards and gifts. This was totally unexpected. It will certainly be a birthday to remember. And if it brings the children joy, then why not?

On Sunday, we mark both St Andrew's feast day and the start of the Christian season of Advent, a time for preparation and reflection. As we draw nearer to Christmas and the Winter Solstice, the darker days and nights allow space to think about how we have spent the year and how we might want to spend the year that awaits us. With pages yet unwritten, so much hope fills them still.

Of course, Monday brings December, the last month of the year. One more moon to go. I do hope you find solace in this season, your own stillness and time to pause amidst the flurry of activity for all those celebrating.

Our children are busy with their learning and preparing our Christmas performance, *Prickly Hay*.

Tuesday mornings are always a joy with singing assembly and the sound of their angelic voices filling the hall.

Next Friday we have our EFF winter fair from 3.15-5.00pm. Thank you to everyone who has volunteered. We are still looking for some volunteers if you can help, even if for a little while. Alternatively, you can join us for the tidy up session from 5.00-5.30pm.

I hope you have a gentle last weekend of November.

Warmest regards,

Mrs Ohene

Headteacher

# Attendance

School attendance over the last 7 days is **92%**

Let's aim to be in **#SchoolEveryDay** next week

The champion year group this week is Year 1 and 2

Reception	Year 1	Year 2
87%	94%	94%



Remember that **#MomentsMatter**

We expect all children to attend school for at least 96% of sessions across the year.

**MOMENTS  
MATTER,  
ATTENDANCE  
COUNTS.**



**ATTENDANCE**  
EVERY DAY COUNTS!

Expected attendance means having no more than seven days off in the school year!

**Attendance matters!**

**Below 90%**  
Serious Concern.  
Persistent absence.

**90 - 95.9%**  
Concern. Low  
Attendance.

**At least 96%**  
Expected  
attendance.





# CONGRATULATIONS



## CELEBRATION ASSEMBLY

Faye - Oak

Rabail - Maple

Ishel - Willow

Arlo - Willow

Saoirse - Oak

Khadijah K - Maple

## HAPPY BIRTHDAY

Mrs Ohene

Jayden - Willow

Zainab - Willow

Faye - Oak

Ali - Willow

Evie - Maple

## HEADTEACHER AWARD

Harley - Birch

Evie - Beech

Alfed - Beech

Jesse - Beech

Esmee - Maple



## Important Dates & Events



Elmtree Infant School - Term Dates & key Events



### → Key Dates

Tuesday 9<sup>th</sup> December – Christmas production Dress Rehearsal 9.30am *Babes in arms/siblings*.

Wednesday 10<sup>th</sup> December – Nursery Xmas songs 9.15-10am Parents welcome.

Thursday 11<sup>th</sup> December – Christmas production 9.15 **No siblings**

Friday 12<sup>th</sup> December – Christmas production 9.15 **No siblings**

Tuesday 16<sup>th</sup> December – New to reception tours 9.30 (26-27 intake)

Thursday 18<sup>th</sup> December – Nursery last day (Xmas party)

Friday 19<sup>th</sup> December – New nursery (January) visit and play.

**Friday 19<sup>th</sup> December – School closes 1.30pm**

### **Collecting Stamps for Hedgehogs!**

After half term, we'll be collecting **used postage stamps** to support the **British Hedgehog Preservation Society**. It's a simple way to help a great cause! Both UK and overseas stamps are welcome—just try to leave about 1cm of paper around each one.

There's a **red collection box** near the front entrance where you can drop them off any time throughout the year.

Thank you for your support in helping protect our prickly little friends! 🦔



### Important Reminders

- Please book school lunches via ParentPay.
- If you would like to volunteer for Wild Woods or Reading please do let the office know.



### Stay Updated!

Keep an eye on our **school website** and **social media pages** for any last-minute changes or additional events.

**Website:** [www.elmtreeschoolandnursery.co.uk](http://www.elmtreeschoolandnursery.co.uk)

**Contact:** [Office@elm.odbst.org](mailto:Office@elm.odbst.org) / 01494 771474

# Mrs Ohene's Big Birthday Bash



## Class Timetables

<b>Class</b>	<b>Wild Woods</b>	<b>PE</b>	<b>Library</b>
Nursery	Thursday AM	Wednesday AM Monday PM	Monday
Beech	Monday PM	Wednesday	Friday
Birch	Thursday PM	Wednesday	Friday
Oak	Wednesday PM	Tuesday/Thursday	Monday
Willow	Friday PM	Tuesday/Thursday	Tuesday
Maple	Tuesday PM	Monday/Friday	Wednesday





# WINTER FAYRE HOT FOOD

Friday 5<sup>th</sup> December 2025

Come & have your tea at the Elmtree Winter Fayre

## HOT DOGS

Enjoy a delicious hot dog\*

\*vegan option also available

Pre-order for only £3!

Hot dogs can be bought on the day for  
£4.50 (subject to availability)

### Pre-orders

Email: [friendsfamily@elmtree.bucks.sch.uk](mailto:friendsfamily@elmtree.bucks.sch.uk)  
(please include your dietary requirements)  
You will then be sent a payment link to pay  
for your food

Hot dogs must be ordered and paid for by  
Friday 28<sup>th</sup> November for the discounted  
price



We Look Forward To Seeing You There!

# ☀️ **Elmtree Infant & Nursery School Charity Appeal** ☀️

## **Turn Your Empty Sweet Tubs into Support for Macmillan Cancer Support!**

**Starting now and running until February Half Term**, we are inviting all families to take part in our school's charity recycling appeal.

### **What We're Collecting**

Please bring in your **clean and empty** plastic tubs, including:

- Celebrations
- Roses
- Heroes
- Haribo
- Cracker tubs

And any similar plastic sweet/chocolate containers

### **Where Your Tubs Go**

All donations will be sent to **Greene King's "Tub2Pub" recycling scheme**, where they will be processed and turned into donations for **Macmillan Cancer Support**.


### **Why Take Part?**

- ✓ Help raise funds for a fantastic cause
- ✓ Reduce plastic waste
- ✓ Support our school community
- ✓ Enjoy your treats *and* help others — **a real win-win!**

---

 **Donations accepted from now until February Half Term**

 **Please drop your tubs at the school entrance**

Thank you for supporting Elmtree Infant & Nursery School and making a difference for families affected by cancer. 



**20% OFF!**  
When you book  
before 24<sup>th</sup> November



# PREMIER HOLIDAY CLUBS



**MON 22<sup>ND</sup>, TUES 23<sup>RD</sup> DECEMBER  
& FRI 2<sup>ND</sup> JANUARY**



**Book today**  
premier-education.com



**Premier**  
Education

**Excellent**  
★★★★★  
★ Trustpilot

# YOUR NEAREST HOLIDAY CLUB

**LITTLE CHALFONT  
PRIMARY,  
AMERSHAM,  
HP6 6SX**

**TIMES:**

9:00 - 3:30pm

**AGES:**

Reception - Year 7

**MANOR FARM  
JUNIOR,  
HAZLEMERE,  
HP15 7PH**

**TIMES:**

9:00 - 3:30pm

8:30 - 5:30pm

**AGES:**

Reception - Year 7

**THOMAS HARDING  
JUNIOR,  
CHESHAM,  
HP5 1LR**

**TIMES :**

9:00 - 3:30pm

8:30 - 5:30pm

**AGES:**

Reception - Year 7

**TRING SPORTS  
CENTRE,  
TRING,  
HP23 5JU**

**TIMES:**

9:00 - 3:30pm

8:30 - 5:30pm

**AGES:**

Reception - Year 7

**WE ACCEPT CHILDCARE  
VOUCHERS!**



Our Holiday Clubs keep children active, safe, and entertained throughout the school holidays.

Join us this Winter as we offer a wide range of fun activities, including sports, performing arts, and games, all at great value. There's something for every child to enjoy as they start 2026!

**Book now** for a holiday full of excitement!

**CLUBS ARE BETTER  
WITH FRIENDS!**



**TREAT YOUR FRIENDS  
TO 20% OFF...AND GET  
20% OFF TOO!**

\*Ts&Cs apply. Refer a friend discount on new bookings only.



Excellent



★ Trustpilot

# SHOUT OUT FOR CHRISTMAS JUMPERS!

We're collecting Christmas  
Jumpers this half term!



Please donate good or very good  
condition jumpers to the front office.  
Thank you!

# SHOUT OUT FOR DRESSING UP!

We're collecting costumes  
this half term!

Pirates • Princesses • Superheroes  
People Who Help Us • Role Play



Please donate good  
or very good condition  
costumes to the  
front office.  
Thank you!

We are also looking for the following:

Dolls/ dolls' clothes

Small world toys: range of vehicles; range of little people/ people who help us (firefighters, police officers, vet, doctor etc); animals (farm, zoo, safari)

Construction: Lego/ Duplo; blocks; magnetic tiles

Games: Jenga, Snakes and Ladders, OK play, Connect 4, Guess Who

Equipment: bean bags, soft balls, hoops

## Uniform Reminder & Lunchbox Guidelines

We kindly ask all families to ensure children are dressed in the correct school uniform each day. This includes **black school shoes only**—please avoid boots, slip-ons, or any other alternatives.

### Lunchbox Checks To support healthy eating and safety:

- Please do not include baby food pouches in lunchboxes.

While convenient, baby food pouches are not suitable for children aged 5 and up. At this age, children benefit from eating whole foods that encourage chewing, support oral motor development, and promote healthy eating habits. Pouches are often high in natural sugars and can contribute to tooth decay, especially when sipped over time. They also don't provide the same sensory experience as solid foods, which are important for developing a healthy relationship with food.

We encourage families to pack a variety of fresh, age-appropriate snacks such as fruit slices, vegetable sticks, cheese, crackers, or sandwiches to support your child's growth and learning.

Double-check use-by dates on all food items—some have recently been over 20 days out of date, which poses a health risk.

Thank you for helping us maintain a safe and healthy school environment!

### Toys at school

As stated in previous newsletters and communications, **children are not allowed to bring toys into school**. This is to ensure that all pupils feel valued and included. Personal toys can unfortunately lead to unnecessary rivalry, distraction from learning, and the risk of items being lost or damaged. We kindly ask that this rule is respected.

Where needed, we provide appropriate fidget or sensory resources in school to support pupils during the day, and staff ensure they are used in a purposeful and supportive way for emotion regulation and learning.

### Mental Health Support Team

We're pleased to let you know that the Mental Health Support Team (MHST) will have a stall at our upcoming Winter Fair.

The team will be available to share information about the support they provide for children and families, answer any questions you may have, and offer helpful resources on wellbeing and mental health.

Please feel free to stop by their stall during the event — we'd love to see you there!

Rhiannon Brooker, Elmtree assigned MHST worker.

**Elmtree raised £82.37 for this years Poppy Appeal**

## PARK AND DRIVE RESPONSIBLY



We kindly ask for your continued support in keeping our school community safe by driving and parking respectfully and responsibly during drop-off and pick-up times.

Please remember to follow all road rules, avoid blocking driveways, and be mindful of local residents who live near the school. Most importantly, always prioritise the safety of our children by parking only in designated areas and avoiding stopping on or near pedestrian crossings or zigzag lines. We want to keep our children and families safe.

Some reminders:

- Do not mount the pavement (our school signs are placed there to avoid this)
- Do not perform U-turns
- Do not double park/ block resident's exits or pathways (we have residents, staff and children with disabilities who need access at all times)
- Do not leave engines running (we want our children to breathe in fresh air outside our school)
- Walk with your child on the pavements

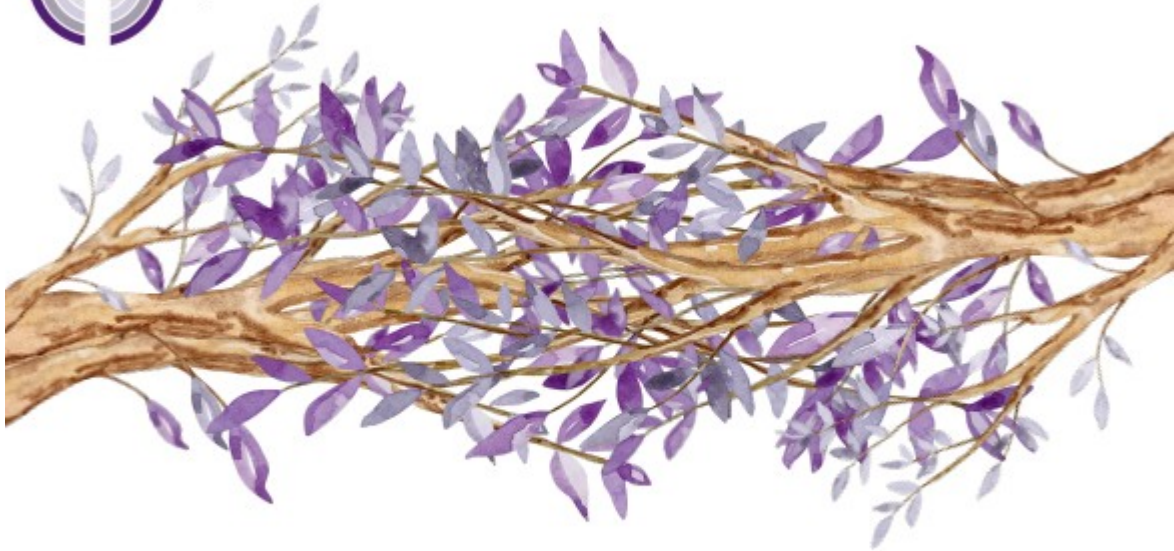
Even better if you can walk, scoot or cycle to school!

Your cooperation helps ensure a safe and considerate environment for everyone. Thank you for doing your part to support our school and local community.





Empowering Lives, Flourishing Together



## Our Trust Prayer

Gracious God,

You are the source of all wisdom and growth.

Thank you for empowering our lives  
through your boundless love.

Guide us to embrace inclusivity in our hearts,  
inspire us to serve others with compassion,  
and strengthen us to make a difference in our community.

May our spirits unite as we flourish together,  
living 'life in all its fullness'.

Amen.

Inclusivity    Community    Service    Empowerment

Living 'life in all its fullness' (John 10:10)

Earlier this year, ODBST invited children across all its schools to help create a special Trust prayer. We are delighted to share the final version with you — a wonderful piece shaped by the thoughts and contributions of many children from across the Trust.

