



# Elmtree Echo

Issue 30



**Respect - Ambitious - Curious - Resilient - Inclusive**



## A Message from Mrs Ohene

Dear Parents and Carers,

It has been a wonderful week of learning and celebrations at Elmtree, in just four days!

On Tuesday, we held our first Mental Health Support Team (MHST) coffee morning which was an opportunity for our community to learn about the work the MHST do and ask any questions related to children's mental health and well-being. We are committed to creating a supportive and inclusive environment where every child feels seen, heard, and valued. As part of this commitment, we are working to break down the stigma often associated with mental health by partnering with our local children's mental health support team.

By integrating this support into our community, we aim to normalise conversations around emotional well-being and ensure that children receive the help they need in a safe and understanding way. Mental health is just as important as physical health, and by working together, we can create a culture where asking for help is seen as a sign of strength. Thank you for your continued support as we foster a nurturing and proactive approach to mental health and emotional well-being for all our children.

On Thursday, we celebrated VE Day as a school, marking 80 years since the end of World War Two. Children and staff wore the colours of the Union Jack and had a whole school picnic lunch in the hall. The photos show just how much this commemorative event was enjoyed by all. It is always a stark reminder that those that lost their lives, gave of their time and efforts and that we have our todays because they gave their yesterdays. Lest we forget, we will remember them.

We are delighted to share the wonderful news that one of our school parents, Aamna Ahmad, has recently been elected as a local Councillor for Chesham, Townsend Ward. This is a fantastic achievement, and we are incredibly proud to see a member of our school community taking on such an important leadership role. We know Aamna will bring great passion, dedication, and a strong voice to the council, and we look forward to the positive impact this will have both locally and within our school. Congratulations once again on this well-deserved recognition!

Have a wonderful weekend- you may just catch the bluebells in the woods, or the poppies and other wildflowers in the long grasses. Do get out in the sunshine for that much needed Vitamin D!

Warmest regards,

Mrs Ohene

Headteacher



# WONDERFUL WORLD CULTURE DAY

## Wednesday 21<sup>st</sup> May



This day was established by the United Nations in 2002 to encourage people to bridge cultural gaps and foster understanding among different communities. We enjoy many different cultures at Elmtree and inclusivity is one of our core values.

### NEEDED: parent volunteers

Can you run a workshop, speak about your culture, offer to help in class? You could even offer to teach the children the numbers 1-10/ 1-20 in your home language or a few words for simple greetings! We would love to celebrate the cultures of our school on 21<sup>st</sup> May. Children will be able to wear their cultural dress, colours of a flag of their choice, or a sports kit related to a country. In school, children will enjoy a play-based curriculum of activities from around the world for the day.

### LEADERSHIP NEWS

Miss Gettings is supporting with leadership in a wider capacity now as Interim Deputy Headteacher whilst Mrs Dowling is on maternity leave. I am sure you will join me in congratulating her.

### NO NUTS

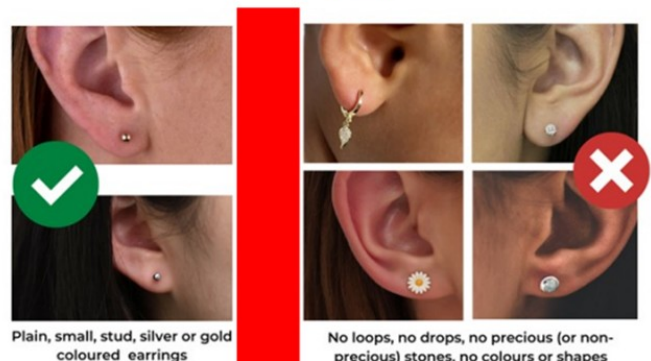
At Elmtree, the safety and well-being of our students is our highest priority. For this reason, we are a **nut-free school**. This policy is in place to protect children who have severe nut allergies—some of whom can have life-threatening reactions even from tiny traces of nuts.

Nut allergies are not simply a matter of discomfort; they can lead to *anaphylaxis*, a serious and potentially fatal allergic reaction that requires immediate medical attention. By ensuring that no nuts or nut products are brought into school, we help create a safe and inclusive environment where all children can learn and thrive without unnecessary risk.

We kindly ask all families to carefully check food labels and avoid sending items containing nuts in packed lunches or snacks. Your cooperation is essential, and we truly appreciate your understanding and support in keeping our school safe for everyone.

### UNIFORM REMINDERS

Please ensure your child is in the correct Elmtree uniform. Footwear should be all black (no branding/ other colours)- shoes that can be fastened, or trainers.



## CANCELLED TRIP

Unfortunately, we had to cancel our planned P.E. trip to Dr Challoner's today for Year 2. As a small school, we rely heavily on parent volunteers for our trips- not just the trips to further destinations, but also those where we travel locally and need adults for the correct ratios to keep children safe.

It is such a shame when we have to cancel trips. It is always with a heavy heart that we do so but we cannot staff these without your help.

## PARKING REMINDERS



We kindly ask for your continued support in keeping our school community safe by parking respectfully during drop-off and pick-up times.

Please remember to follow all road rules, avoid blocking driveways, and be mindful of local residents who live near the school. Most importantly, always prioritise the safety of our children by parking only in designated areas and avoiding stopping on or near pedestrian crossings.

Your cooperation helps ensure a safe and considerate environment for everyone. Thank you for doing your part to support our school and local community.

## PARENT CONDUCT

At Elmtree, we are committed to fostering a positive and respectful environment for both students and staff. As partners in your child's education, it is essential that we maintain a culture of respect and understanding for everyone in our school community.

We kindly ask that all interactions with our staff—whether in person, via email, or on the phone—remain respectful and considerate. Our staff work hard every day to create a safe, nurturing, and effective learning environment, and it is important that we support and appreciate their efforts.

Mutual respect ensures that we can work together in the best interest of our children, promoting cooperation and a sense of community. When we treat one another with kindness and courtesy, we set a positive example for our students and create a healthier school environment for all.

Please refer to our Parent Code of Conduct for more information on how we can work successfully together. Thank you for your continued support and for helping us maintain a respectful and collaborative atmosphere at Elmtree.

# National Smile Month

I am safe  
I feel safe



**I keep my teeth  
healthy**

For National Smile Month 2025, we're focusing on the powerful connection between diet and oral health with our theme, **Feed Your Smile**. The children will learn about this next week in their, 'I am safe, I feel safe' assembly.

Diet plays a crucial role in maintaining a healthy, beautiful smile, and we want to help children and families make smart choices that promote oral health every day.

## **What we'll be talking about**



Why a balanced diet, hydration, and healthy snacks contribute to strong, bright teeth by enhancing enamel, protecting gums, and preventing tooth decay.



How reducing sugar intake helps maintain good oral health and prevent long-term dental issues.



Why dairy products, gut health, and specific foods can strengthen teeth, while sugary, acidic, and processed foods should be limited to avoid damage to your oral health.

# National Smile Month

## **The importance of a good oral health routine**

While diet plays a key role in oral health, having a consistent and effective oral health routine is equally important.

National Smile Month is the perfect opportunity to remind yourself of the basics of a good daily oral health routine:

- Twice daily brushing with fluoride toothpaste.
- Cleaning between your teeth with interdental brushes or floss.
- Using a fluoride mouthwash.

Visiting your dentist regularly.

This combination of healthy habits and a balanced diet will help you combat the effects of food and drink on your teeth and gums, keeping your smile bright and healthy for years to come.

Please see the website for more details.

[About National Smile Month 2025](#)



# CONGRATULATIONS



## CELEBRATION ASSEMBLY

Haris - Beech

Lyla - Beech

Cassidy - Birch

Lola— Hope - Birch

Lenny—Oak

Amira - Oak

Ashleigh - Cherry

Maggie - Maple

Roxy - Cherry

Mason - Maple

Freddie - Cherry

## HAPPY BIRTHDAY

Ayaat - Nursery

Arlo - Beech

Ava - Cherry

Franio - Cherry

Maksym - Maple

## HEADTEACHER AWARD



## Important Dates & Events



Elmtree Infant School - Term Dates & key Events



### ➔ Key Dates

13th May YR2 Stay and learn Maths 9-9.30am

14th May YR1 Stay and learn Maths 9-9.30am

15th May Reception Stay and Learn Maths 9-9.30am

16th May Nursery stay and learn 9-9.30am 2.45-3.15pm

13th/20th May - Carnival costume prep - 3.10pm (Parents to accompany)

3rd/10th June - Carnival costume prep - 3.10pm (Parents to accompany)

19th June - Summer Ball (during school hours)

### ♥ Upcoming Highlights

15th May - EFF Coffee, cake and uniform sale

16th May - EFF Mufti - Bring a bottle for Carnival

23rd May INSET DAY SCHOOL CLOSED

14th June - Chesham Carnival 'The Day the Crayons Quit'

28th June - EFF Summer Fayre (time tbc)

### 📍 Important Reminders

- **Please book school lunches** on the Schoolbitez website.
- If you would like to volunteer for Wild Woods or Reading please do let the office know.

### 📌 Stay Updated!

Keep an eye on our **school website** and **social media pages** for any last-minute changes or additional events.

**Website:** [www.elmtreeschoolandnursery.co.uk](http://www.elmtreeschoolandnursery.co.uk)

**Contact:** [Office@elm.odbst.org](mailto:Office@elm.odbst.org) / 01494 771474

# VE Day Celebration's







# School Attendance

## What parents and carers need to know

### Why attend every day?

Attending school at Elmtree is crucial for your child's early education for several reasons:

1. **Early Development:** Infant and Nursery children are in a critical stage of brain development. High quality early education at Elmtree provides a stimulating environment that promotes cognitive, social, and emotional development.
2. **Social Skills:** School offers children the chance to interact with peers, helping them develop essential social skills such as sharing, cooperation, and empathy.
3. **Routine and Structure:** School provides a consistent routine that helps children feel secure and understand the flow of daily activities. This structure can be beneficial for their overall development.
4. **Language Development:** Engaging with teachers, support staff and other children in school exposes children to rich language experiences, which are vital for communication skills and literacy development.
5. **Physical Development:** Early education includes activities that promote fine and gross motor skills, such as climbing, drawing, and playing with various materials. Children in the EYFS are supposed to be out of breath several times a day- they are at Elmtree!
6. **Emotional Resilience:** Being in school helps children learn to navigate emotions and build resilience by self-regulating, as they experience new situations and develop coping strategies.
7. **Parental Support:** Early schooling can also be an invaluable resource for parents, providing you with support and information about your child's learning and progress.

**Foundation for Future Learning:** The experiences and skills gained in early education lay the groundwork for later academic success, making the transition to formal schooling smoother from the early years to key stage one, and then to key stage two (and beyond).

Attending school for at least 96% of the time supports children to thrive in a nurturing environment, setting the stage for lifelong learning and development.

### When a child can be absent from school

A child must attend school every day that the school is open, except in a small number of allowable circumstances such as being too ill. Medical appointments such as for the dentist/ GP should be made outside of school timings.

Children should never miss school for reasons such as, but not limited to:

- Holidays during term time (these will not be authorised)
- Shopping
- Birthdays
- To wait in for a repair person
- To take a family member to an appointment

**You have a legal duty to ensure that your child attends school every day and is on time.**

Taking your child out of school during term time for holidays is also likely to impact on their achievement. There are 38 weeks in the year when schools are open, and 14 weeks when families can take holidays. Head teachers can only authorise a leave of absence in exceptional circumstances.

# School Attendance

## The effects of irregular attendance

A pupil who misses 10% or more of school (equivalent of 1 day or more per fortnight) is less likely to attain their potential academically.

Missing school can also:

- cause anxiety about returning
- cause difficulties in maintaining friendships

mean missing out on socialising and decline in general wellbeing

## Support

We know children may struggle to attend school for a wide range of reasons. We will always work with you to help overcome any issues. Elmtree has strong pastoral support and there are several different ways we can support your child to attend school. If you would like any further information then please speak to our Family Liaison Officer, Miss Snowdon.

## Consequences

If your child takes unauthorised holidays or takes longer than the time agreed by the Headteacher, this absence will be recorded as unauthorised. Sanctions could be imposed including:

Your child could lose their school place

You could face a penalty fine (per parent per child)

You could be subject to legal action by the authority that could result in a fine of up to £2,500. If your child has an unauthorised absence, such as taking holidays during term time, re-occurring lateness, or persistent absence for any other reason other than certified illness, the school will refer the matter to the Council for consideration of a Penalty Notice and/or Prosecution in the Magistrates' Court which may lead to a criminal record with a maximum fine of £2,500 and/or 3 months imprisonment.

***Regular and punctual attendance is both a legal requirement and essential for your child to maximise the opportunities available to them.***

## Understanding the impact of lateness and absence for your child



At Elmtree we have a soft start from 8.45-8.55am. Gates close at 8.55am. Registers close at 9.00am. If your child arrives after this, they will be marked as late.

<b>If in a school year a child is late by-</b>	<b>Your child will have lost approximately this much learning-</b>
5 minutes	3.2 days (16 lessons)
10 minutes	6.3 days (32 lessons)
15 minutes	9.5 days (48 lessons)
20 minutes	12.7 days (64 lessons)
25 minutes	15.8 days (79 lessons)

## School Attendance

In order to achieve our expected 96% attendance success, children must be in school for at least 184 out of 190 days. This means that no more than 6 school days can be missed to ensure your child achieves their full potential and maximises their learning.

<b>If a child's attendance during the school year is-</b>	<b>Your child will have lost approximately this much learning-</b>
96%	6 days (30 lessons)
95%	9 days (45 lessons)
90%	19 days (95 lessons)
85%	29 days (145 lessons)
80%	38 days (190 lessons)
75%	48 days (240 lessons)

# CHESHAM CARNIVAL—JUNE 14TH

## 'THE DAY THE CRAYONS QUIT'

WE ARE THRILLED TO BE INVOLVED IN THIS YEAR'S CHESHAM CARNIVAL, WHERE OUR THEME IS INSPIRED BY THE DELIGHTFUL BOOK, **"THE DAY THE CRAYONS QUIT"**!

GET READY FOR A DAY FILLED WITH **COLOURFUL FUN**, CREATIVITY, AND EXCITEMENT.

IT'S A FANTASTIC OPPORTUNITY FOR FAMILIES TO COME TOGETHER, CELEBRATE, AND **MAKE WONDERFUL MEMORIES.**

DON'T MISS OUT ON THIS **VIBRANT EVENT!** PLEASE SIGN UP AND JOIN US FOR A DAY THAT PROMISES TO BE AS FUN AND IMAGINATIVE AS THE CRAYONS THEMSELVES.



WE CAN'T WAIT TO SEE YOU THERE!

THE DAY the  
CRAYONS QUIT

