



# Elmtree Echo

## Issue 32



**Respect - Ambitious - Curious - Resilient - Inclusive**



## A Message from Mrs Ohene

Dear Parents and Carers,

Elmtree has been a hive of excitement this week with World Culture Day and the Year 1 trip to Windsor Castle.

We're delighted to share that our Year 1 children did us all proud on their trip to Windsor Castle! They represented the school with exemplary behaviour, enthusiasm, and curiosity throughout the day. Staff at the castle and members of the public even commented on how polite and engaged our pupils were – a true credit to our school community. Thank you for your continued support in making these enriching experiences possible.

On Wednesday, we celebrated World Culture Day, a chance to represent the different cultures and countries we associate with as well as those across the world. Children took part in a play-based learning curriculum for the day with activities based on traditions and customs from all over the world. They learned the Haka, a traditional Māori dance typically performed at the beginning of rugby matches by the New Zealand national team. They also learned about Mehndi, a ceremonial art form used in Indian, Pakistani, Bangladeshi and Afghani cultures for wedding celebrations. Children were also able to create their own tribal necklaces and build Lego landmarks with a global theme.

Even as adults, one of the great things about better weather is that we somehow tap into our inner child and 'play' more because the outdoors allows for this during the Spring and Summer months.

The advantages of play include of course benefits to our mental health and wellbeing. Activities that are fun allow us to reach a state of, 'flow;' getting so engrossed that we lose all sense of time and can be at our most productive, as well as the opportunity to let go and just be. Further benefits are seen in the reduction/ relief of stress, stimulation for the mind and giving ourselves a creativity boost. Play can be both physically healthy and help to deter feelings of depression, keeping us in a positive mind-frame which ultimately keeps our brains flexible!

Often, our inner child becomes neglected as the years go by. Adult life requires a sense of seriousness and structure as we take on different responsibilities. We can lose our sense of playfulness in the process. 'Play is more than just fun, ' explains Dr Stuart Brown of the National Institute for Play, 'Play has the power to deeply enrich your adult life.' And as George Bernard Shaw famously said, 'We don't stop playing because we grow old; we grow old because we stop playing.'

I wonder what you used to get lost in as a child- swinging on a swing and facing the sky, riding a bike, rolling down a hill, crafts, cloud-watching. My inner child comes out at a funfair, on the kiddie rides of teacups, the carousel or even the Walzter, which sees me in fits of giggles.

Anyone remember 'Ferris Bueller's Day Off?' If we had one day to just play, what would we do with it?

So, here's to play- for our little people, our medium-sized people and us BIG PEOPLE!

Have a wonderful half term- get out there and play until your heart is content.

Warmest regards,

Mrs Ohene

Headteacher





# CONGRATULATIONS



## CELEBRATION ASSEMBLY

### HAPPY BIRTHDAY

Charlie - Maple

Livia - Beech

### HEADTEACHER AWARD

Emilie - Nursery



Yunus - Nursery

# Attendance

School attendance over the last 7 days is **94%**

**Below our expected 96%**

Let's aim to be in **#SchoolEveryDay** next week

The champion year group this week is **Year 1**

**Reception**

**92%**



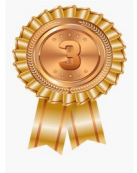
**Year 1**

**95%**



**Year 2**

**91%**



Remember that **#MomentsMatter**

We expect all children to attend school for at least 96% of sessions across the year.

**MOMENTS  
MATTER,  
ATTENDANCE  
COUNTS.**



**ATTENDANCE**  
EVERY DAY COUNTS!

Expected attendance means having no more than seven days off in the school year!

**Attendance matters!**

**Below 90%**  
Serious Concern.  
Persistent absence.

**90 - 95.9%**  
Concern. Low  
Attendance.

**At least 96%**  
Expected  
attendance.





## Important Dates & Events



### Elmtree Infant School - Term Dates & key Events



#### ➔ Key Dates

**\*\*3rd June - Wendover House can Wear RED\*\***

3rd/10th June - Carnival costume prep - 3.10pm (Parents to accompany)

11th June - Reception group assembly 9am

19th June - Summer Ball (during school hours) £2.50 contribution, snack and drink provided

**17th June - Sports Day at Thomas Harding (from 1pm)**

20th June - Nursery Sports Day 11.00-11.30am/ 1.00-1.30pm

**1st July - Transition Day — Year 2 to Junior school — New Reception in School**

#### ♥ Upcoming Highlights

**23rd May INSET DAY SCHOOL CLOSED**

13th June - Dads Behaving Dadly 2.30pm All dads, Grandads, Uncles welcome.

14th June - Chesham Carnival 'The Day the Crayons Quit'

24th June - Year 1 Class Assembly

26th June - EFF Coffee Cake and Uniform Sale 3.20pm

28th June - EFF Summer Fayre 11am-1pm

**\*\*\*22nd July - Year 2 Leavers Production and Assembly\*\*\***

#### 📌 Important Reminders

- Please book school lunches on the Schoolbitez website.
- If you would like to volunteer for Wild Woods or Reading please do let the office know.

#### 📌 Stay Updated!

Keep an eye on our **school website** and **social media pages** for any last-minute changes or additional events.

**Website:** [www.elmtreeschoolandnursery.co.uk](http://www.elmtreeschoolandnursery.co.uk)

**Contact:** [Office@elm.odbst.org](mailto:Office@elm.odbst.org) / 01494 771474

# Update

Dear Parents,

As it is half term next week, we won't be setting any formal homework. We want children and families to be able to enjoy their half term break, catch up with family, and do some fun activities together.

Below you'll find some optional activities to help keep minds active, curious, and connected with the world around them.

Keeping going with the basic foundations (number bonds and times tables, reading, opportunities for writing) are really important and we hope you will find some time during half term for these.

We wish everyone a super half term!

## Reading Ideas

Read regularly (every day if possible) and keep track in your reading record.

Create a cosy outdoor reading spot in your garden or local park – bring a blanket and a favourite book!

Try a book scavenger hunt: Can you find a book with a hero, an animal, a journey, or a surprise ending?

## Mathematics Ideas

1. Keep up with <https://numbots.com/> (younger children) or <https://play.trockstars.com/auth/school/student/39207> (older children) as usual. Aim to do this at least three times during half term.
2. Download the free 1-minute maths app from White Rose Maths and do a bit each day. This will be perfect for younger children (it's designed for children in Years 1 and 2)
3. Try measuring: Bake something together and talk about grams, litres, and timing.
4. Play outdoor maths: Counting while skipping, estimating distances or timing how fast you can run 100m.

## Summer 1 – Reception Newsletter

This half term our topic has been “Once upon a time”. We have learnt about traditional tales. We have designed outfits for the ball in the story of Cinderella, we have made stick puppets for the story of *The Three Billy Goats Gruff*.



Thank you to all who came to the stay and learn the children had a lovely time solving the maths problems.



This term we have also been growing our own tomatoes and will be sending these home soon!

# Year 1 Windsor Castle



Schools of  
**Chesham Carnival**

Arrangements for Saturday, 14<sup>th</sup> June 2025 will be as follows:

- Please attend Asheridge Road with your lorry/vehicle/walkers between 1030 and 1100.
- Please ensure that you are mindful of the many children who will be on Asheridge Road from 1000. Children have minimal awareness of moving vehicles!
- Asheridge Road will be **closed to all vehicles** at 1130. There will be no exceptions to this, so please make sure you arrive before this time.
- No vehicles other than floats should be parked along Asheridge Road for safety reasons. If you need to leave a vehicle please ensure it is parked away from Asheridge Road.
- Please look out for Committee Members in high viz jackets who will be able to direct you to your allocated position.
- Buckets will be given out to walking members of your float teams to help collect money from the general public. Buckets will be collected from your teams in Watermeadow Car park.
- The procession will commence at 12 noon sharp. When the last float has passed onto Bellingdon Road, Asheridge Road will reopen.
- We look forward to seeing you on Saturday! If you have any queries please email or call Sally Hills on 07891 526110 on the day.

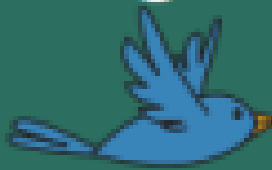
# WOODLAND CREATURE HUNT!



- This long and slimy creature wiggles in the mud! Can you find a worm?



- They whistle sweet songs and fly through the sky! Can you spot a bird?



- They run up trees and hide away! How close can you get to a squirrel?



- They are super sneaky, you might spot one of their dens! Will you be lucky enough to spot a Fox?



- Be careful when kicking the leaves! You might come across a spiky hedgehog.



- What other creatures or animals can you find?



# Rainbow

## Scavenger Hunt

**Find something red**

**Find something orange**

**Find something yellow**

**Find something green**

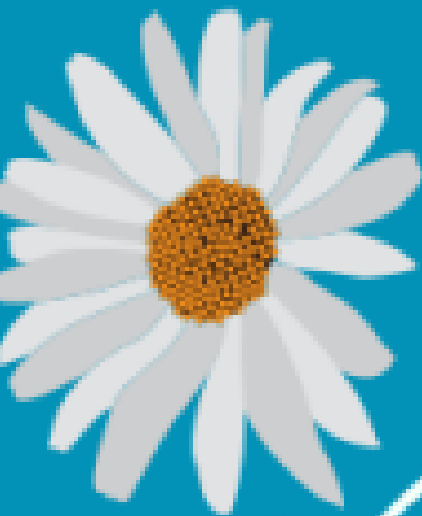
**Find something blue**

**Find something purple**

# Magic Woodland Potions



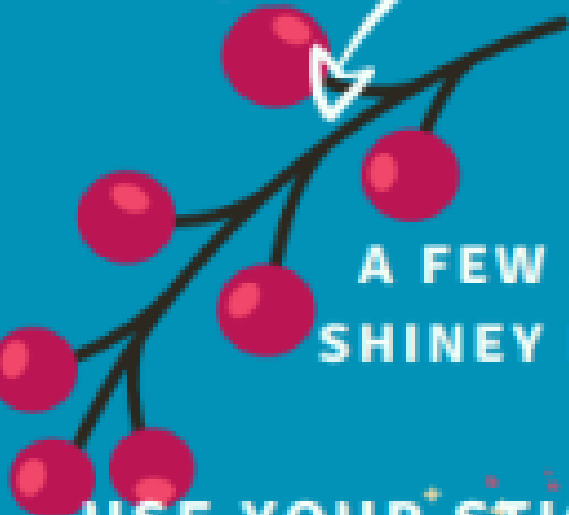
TAKE A CONTAINER OUT ON YOUR ADVENTURE.  
ADD A DASH OF WATER AND USE A MAGIC STICK FOR STIRRING.  
GATHER BITS AND PIECES THAT CATCH YOUR EYE AS YOU  
EXPLORE THE FOREST!



ADD A  
BEAUTIFULLY  
SCENTED FLOWER



A BRIGHTLY  
COLOURED LEAF



A FEW SUPER  
SHINEY BERRIES



A PRETTY  
FEATHER

USE YOUR STICK TO STIR  
YOUR POTION!

THEN FIND A  
SPOT TO POUR OUT YOUR  
POTION AND.....

Make  
a wish!



# Leaf



# Identification

[www.havefunoutdoors.co.uk](http://www.havefunoutdoors.co.uk)



**Ash**



**Beech**



**Sycamore**



**Holly**



**Horse  
Chestnut**



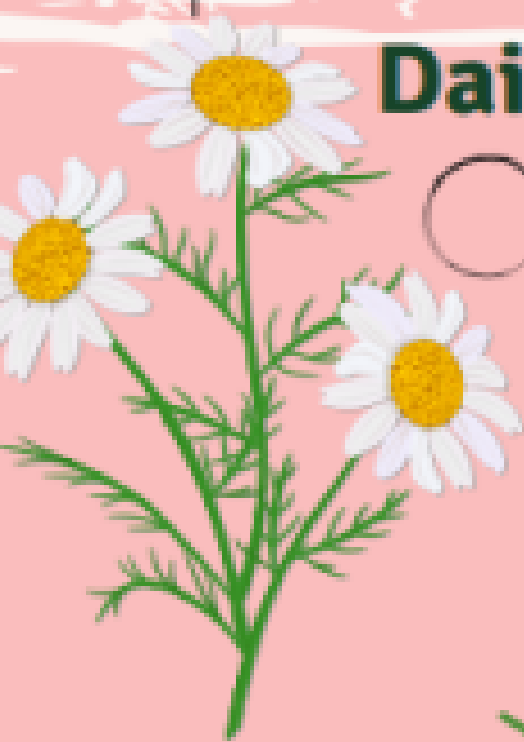
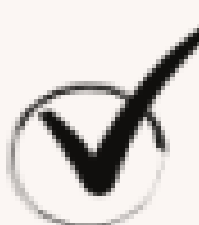
**Oak**



**Tick them off and tag us when complete!**



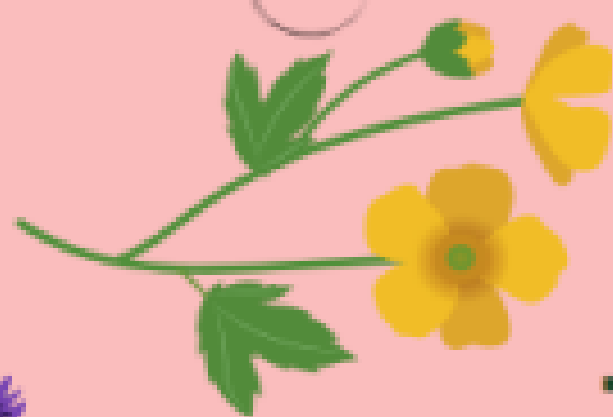
# Flower Identification



**Daisy**



**Dandelion**



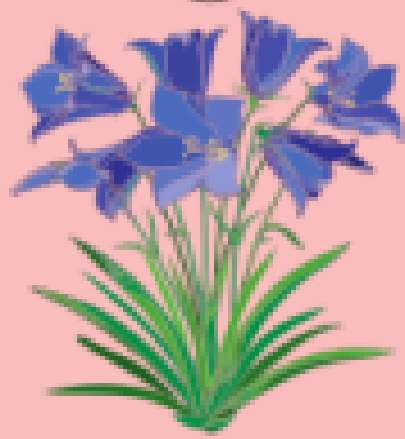
**Buttercup**



**Lavender**



**Bluebells**



**Tulip**



# Bug Observation

**My bug's name:**

---

**Type of bug:**

---

**Colour of bug:**

---

**How many legs  
does it have?**

---



**Draw your bug**

**3 things about my bug...**

---

---

---

---

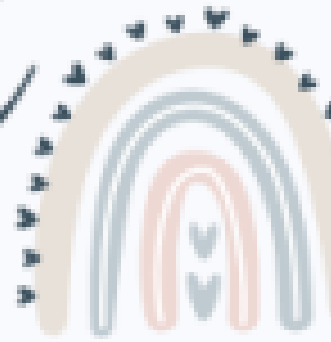
---

---

---

# A Mindful

## Scavenger Hunt



**Find something that....**

<b>smells nice</b>	<b>makes you smile</b>	<b>feels smooth</b>	<b>is old</b>
<b>makes a loud noise</b>	<b>makes you laugh</b>	<b>feels cold</b>	<b>makes a quiet noise</b>
<b>feels bumpy</b>	<b>reminds you of someone</b>	<b>is your favourite colour</b>	<b>is the colour of the sky</b>
<b>makes you feel grateful</b>	<b>looks pretty</b>	<b>you have never seen before</b>	<b>is your favourite shape</b>



CHILTERN  
CHALK STREAMS  
PROJECT



## Mayflies Storytelling and Craft with Chiltern Chalk Streams Project

Wednesday 28th May - 10.30-11.30am  
Chesham Library

Join *Laura Silverstone* from the **Chilterns Chalk Streams Project** for a Mayfly themed craft and storytelling session at Chesham Library.

A wonderful opportunity to learn about chalk streams and why they are so special.

**For Children aged 3-10 and their families.**

Please ensure to book your free ticket on our website or at Chesham Library.

**Buckinghamshire Libraries**

01296 382415 | To use Text Relay dial 18001 01296 382415  
[www.buckinghamshire.gov.uk/libraries](http://www.buckinghamshire.gov.uk/libraries)



MADE BY

# Child Car Seat Check Event

**Tuesday**  
**3rd June 2025**  
**10am - 3pm**

**Asda Superstore**  
**Holmers Farm Way**  
**High Wycombe**  
**HP12 4NU**

*Pop along for FREE advice  
and an independent check!*



**Child Seat Safety Ltd**